

TRANS
QUEER
LESBIAN
BISEXUAL

The Dating SHOW

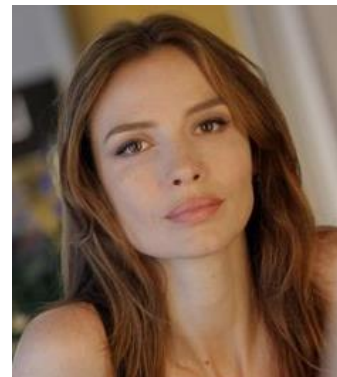
Coming out for **LOVE**



The **Lesbian Dating Show** is a high concept
Romantic Dating Show
with a new twist that is **long overdue!**



We follow our Lead—a woman **Newly Coming Out**—
as she dates beautiful exciting Lesbians from all
walks of life, voting them out until she ends up
pursuing true love with our final contestant, in a new
Lesbian relationship.



The Mega Successes of Lesbian centric shows like **The L Word**, **Orange is the new Black**, **Gentleman Jack** and **Killing Eve** demonstrates that there is a hungry and driven audience for lesbian-themed content.

But what's missing from that legion of popular and very successful shows is a franchise devoted to

romance, romp and reality!



Enter The **Lesbian Dating Show**.

Using the popular competition format of **voting out contestants** over 12-14 episodes of dating to **find True Love**, the Lesbian Dating Show is a fresh take on an already proven and successful formula.



Combine that with a Lesbian who is Newly Coming Out, a **never before seen cultural reality**, while wrapping it in humor and steeping it in romance —

and, **VOILA**, you have a new formula for entertainment that is fresh, fun, and turned up, generating limitless reach and potential.

Romance

For The Very First Time.

Few people are immune to the blush of new love. It's a primary driver for all of humanity. But what does it feel like for a woman the first time she's with another woman? What does our Lead's **first kiss** with a woman feel like? **First Date? First Dance?** Viewers get to share in our Lead's elation and **confusion, lust and distrust**, and everything in-between as she discovers her authentic self and identity.

And between two women, romance can multiply ten-fold, creating endless scenarios for **fun, mischief and romance**. It's about finding true love during a life-altering transition that ups the ante.

Who better to do a romantic dating show than the "**Queen of Romance**" award-winning **writer/ director/ producer, Nicole Conn!**



Watching our Lead work her way through her Coming Out — will not only be uniquely interesting but very educational and couched in humor. The Lesbian Dating Show's sheer popularity will not only entice the **Celesbians (comedians, actresses, singers, writers)** hosting many of the episodes, but their savvy humor will help educate the world on the universe of Sappho and how love is uniquely challenging for a newly Coming Out Lead. **What kind of woman does she like?** She had a type for men, is it the same type with women? What is the woman-to-woman etiquette, or is there any? How does she identify herself in the lesbian world, or does she?



Entertainment

In addition, **who doesn't love to pick their own horse and cheer on our particular contestant** to win the heart of the lead by the end of the series and finally, who doesn't love

over-the-top



Drama & Conflict

If there ever was a breeding ground for drama and conflict, it is with a collective group of **women all fighting over the same woman**. There's a reason we call it **Dyke Drama!!!**

Why Now?

Because we all love romance and levity, whether we admit it or not. And face it, right now during these dark and challenging times, **we need romantic content more than ever!** With COVID yawning endlessly before us, we believe

Romance is the Remedy!

Thank you for your time.



A Nicole Conn Films Global production



in partnership with Tello Films



Sponsors:



Contact Info:

www.nicoleconnfilmsglobal.com

Nicole Conn: coco@nicoleconnfilmsglobal.com

Nicole Conn Films Global Executive Team



Nicole Conn
Owner/Writer/Director/
Producer



Lissa Forehan
Creative Producer

Laura Rossi
Chief Executive Officer

Rachelle Goodness
Consulting Producer

Patty Ferguson
Consulting Producer

René Porter
Director of Marketing
& Brand Management

Tello Executive Team

Founders:

Christin Baker

Ashley Arnold

Danielle Jablonski

